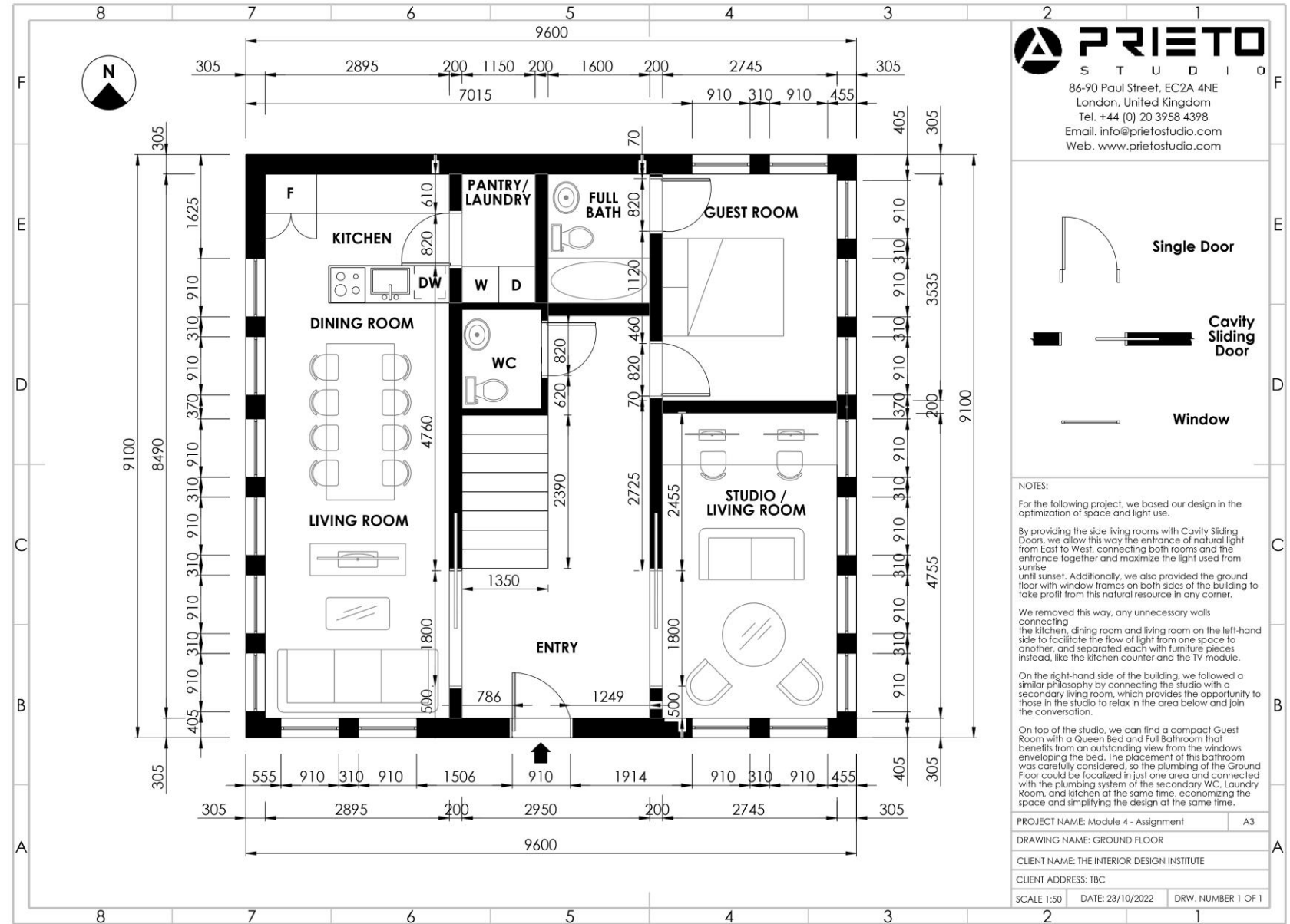




Where Design meets Art

PROJECT DESCRIPTION

For the following project, we based our design in the optimization of space and light use. By providing the side living rooms with Cavity Sliding Doors, we allow this way the entrance of natural light from East to West, connecting both rooms and the entrance together and maximize the light used from sunrise until sunset. Additionally, we also provided the ground floor with window frames on both sides of the building to take profit from this natural resource in any corner. We removed this way, any unnecessary walls connecting the kitchen, dining room and living room on the left-hand side to facilitate the flow of light from one space to another, and separated each with furniture pieces instead, like the kitchen counter and the TV module. On the right-hand side of the building, we followed a similar philosophy by connecting the studio with a secondary living room, which provides the opportunity to those in the studio to relax in the area below and join the conversation. On top of the studio, we can find a compact Guest Room with a Queen Bed and Full Bathroom that benefits from an outstanding view from the windows enveloping the bed. The placement of this bathroom was carefully considered, so the plumbing of the Ground Floor could be focalized in just one area and connected with the plumbing system of the secondary WC, Laundry Room, and kitchen at the same time, economizing the space and simplifying the design at the same time.



ENTRY

As we come into the house, a set of two task lights have been placed outside for better illumination before accessing the building. Once in, on the right-hand side you will find three switches connected independently: one to the general recessed lights of the entrance, one to the pendant light in its centre and one to a two-way switch along the hallway.

LIVING ROOM / DINING ROOM AND KITCHEN

When entering the Living room, to the right-hand side we have placed the majority of switches, GPOs and connexions to make it easily accessible for the user. From there, you can connect directly and independently with the recessed lights, the pendant light from the living room, the set of three pendants on top of the dining table, and the two-way lighting in the kitchen, at the back. Here you will also find a task light LED strip underneath the top cabinets, directed over the counter under them as well as a Quadruple GPO for extra appliances. An exhaust fan on top of the stove will clear the room of bad smells and fumes. Additionally, we have also placed a set of different GPOs on the corners of the room to provide additional lighting there where needed.

PANTRY

The pantry counts with a simple general recessed light as well as double GPO for the washing machine and dryer and a smoke detector over them.

STUDIO AND LIVING ROOM

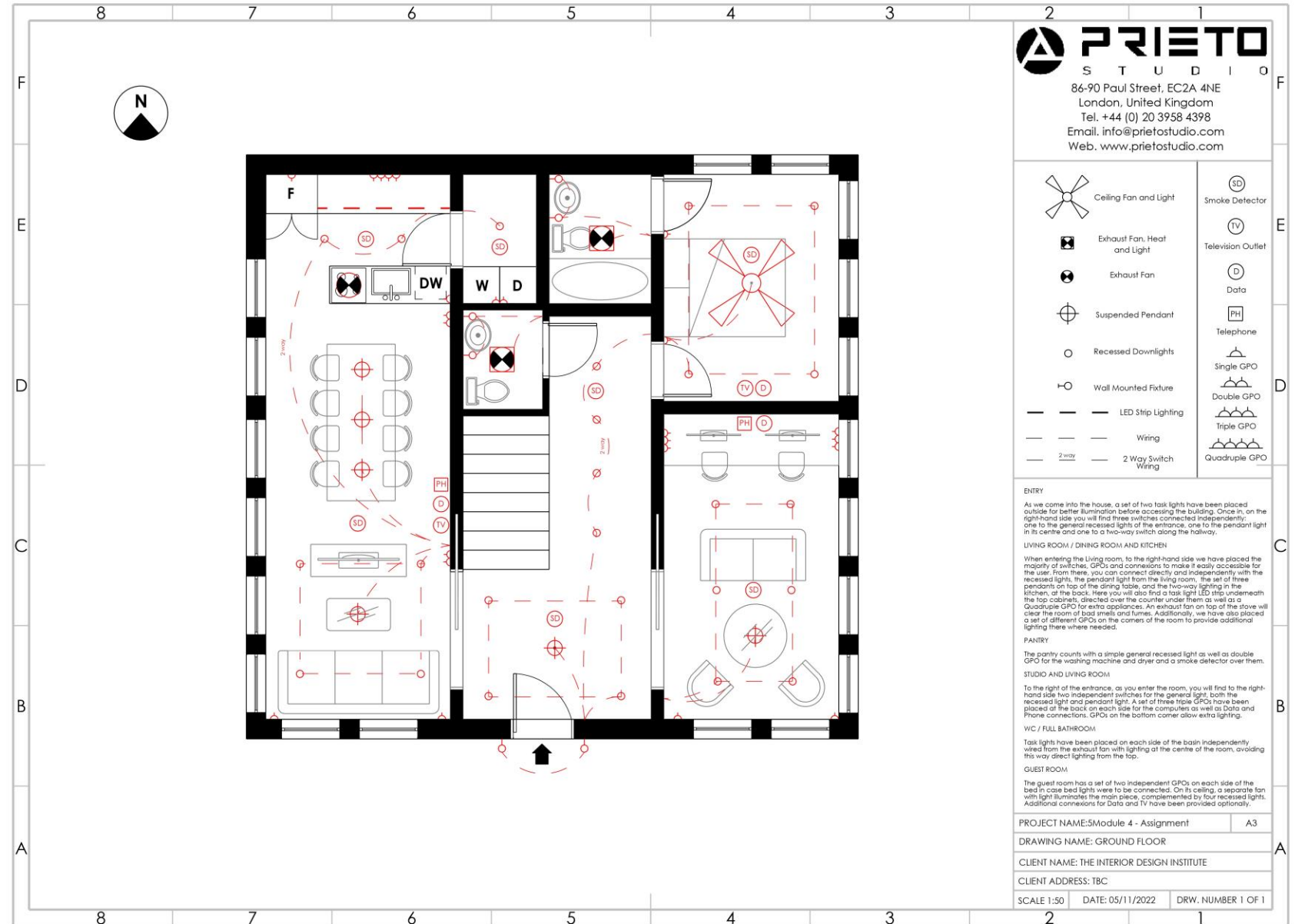
To the right of the entrance, as you enter the room, you will find to the righthand side two independent switches for the general light, both the recessed light and pendant light. A set of three triple GPOs have been placed at the back on each side for the computers as well as Data and Phone connections. GPOs on the bottom corner allow extra lighting.

WC / FULL BATHROOM

Task lights have been placed on each side of the basin independently wired from the exhaust fan with lighting at the centre of the room, avoiding this way direct lighting from the top.

GUEST ROOM

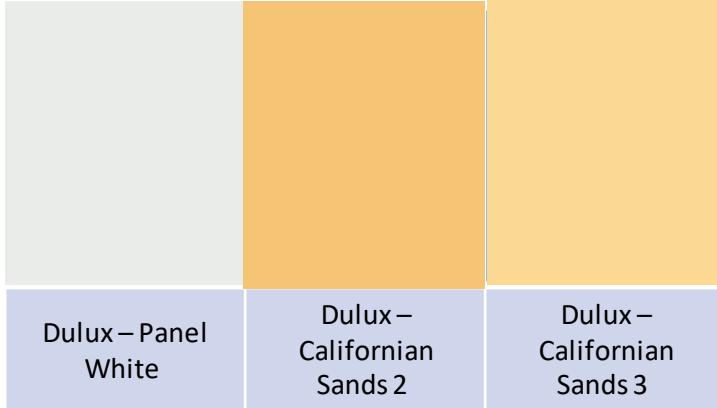
The guest room has a set of two independent GPOs on each side of the bed in case bed lights were to be connected. On its ceiling, a separate fan with light illuminates the main piece, complemented by four recessed lights. Additional connexions for Data and TV have been provided optionally.



COLOUR SCHEME

HARMONY GROUP: SPLIT COMPLEMENTARY

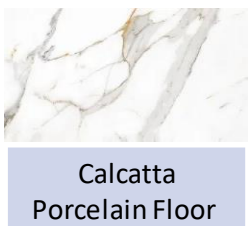
PAINTED SURFACES (INCLUDES WALLPAPER)



ACCENT COLOURS (FURNITURE & ACCESSORIES)



FLOORING



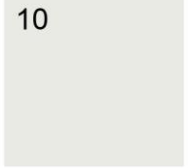
DESCRIPTION NOTES

Walls of sandy hues will bring into the room a luxurious look of Arabic influence, tainted with exquisite fabrics of two complementary colours to create an opulent oasis in the middle of the room. The use of white floors and ceiling will also enhance the height of the space, creating the illusion of an infinite ceiling, and the marble flooring will reflect the natural light from the windows granting every room an additional warm tint.



Area	Colour	Name & Code	Finish
Front Door	Light Green	50GY 83/020 - Panel white	Dulux, Satin
Sliding Doors		50GY 83/020 - Panel white	Dulux, Satin
Interior Doors		50GY 83/020 - Panel white	Dulux, Satin
Door frames		50GY 83/020 - Panel white	Dulux, Satin
Laundry & WC Walls	Yellow	32YY 73/398 - Californian sands 3	Dulux, Semi-gloss
Window Frames	Light Green	50GY 83/020 - Panel white	Dulux, Satin
Skirting, Architraves		50GY 83/020 - Panel white	Dulux, Satin
Hallway & Stair Walls	Yellow	20YY 61/475 - Californian sands 2	Dulux, Satin
Ceiling	Light Green	50GY 83/020 - Panel white	Dulux, Flat
Dining, living, kitchen and studio room walls		20YY 61/475 - Californian sands 2	Dulux, Eggshell

Living Room



1



2



3



4



6



7



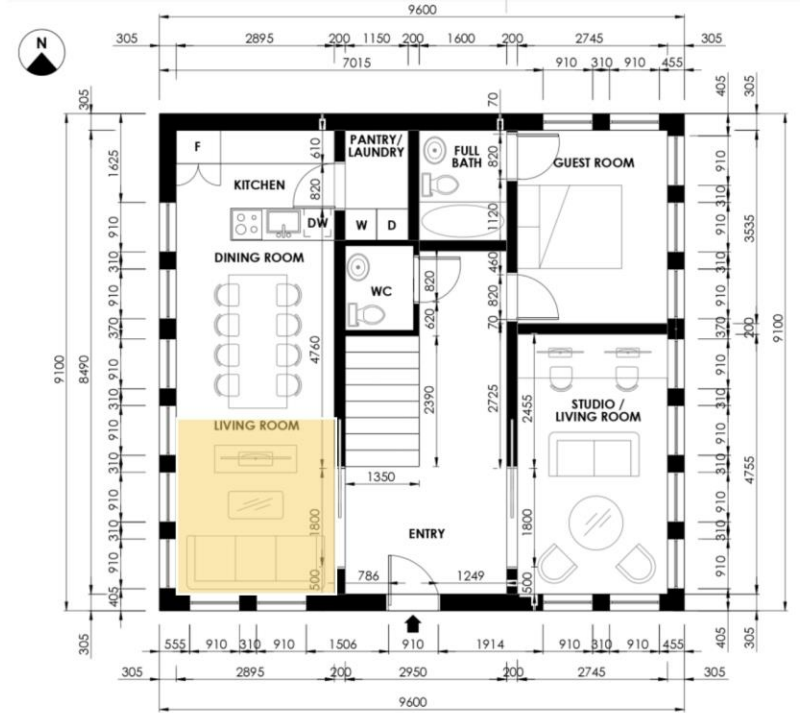
5



8

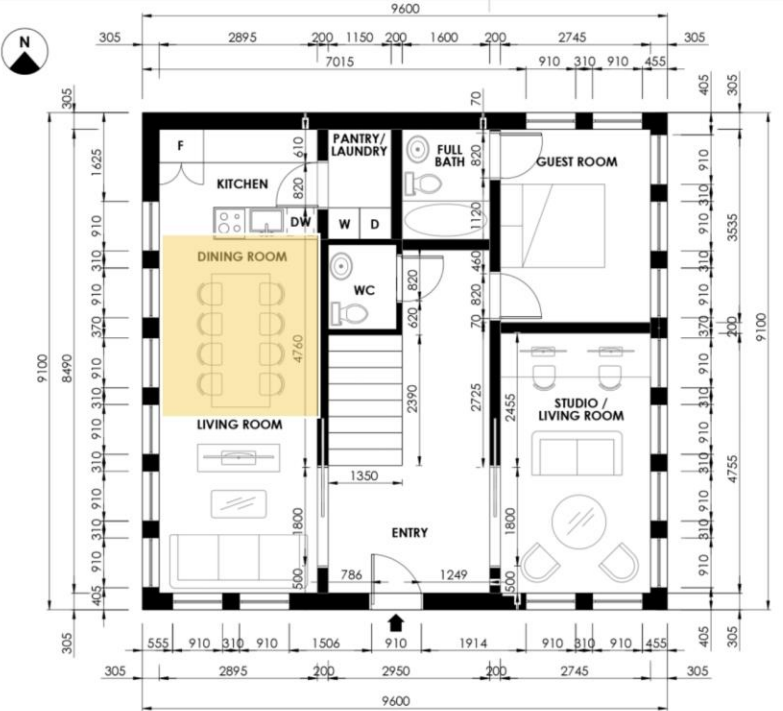


9



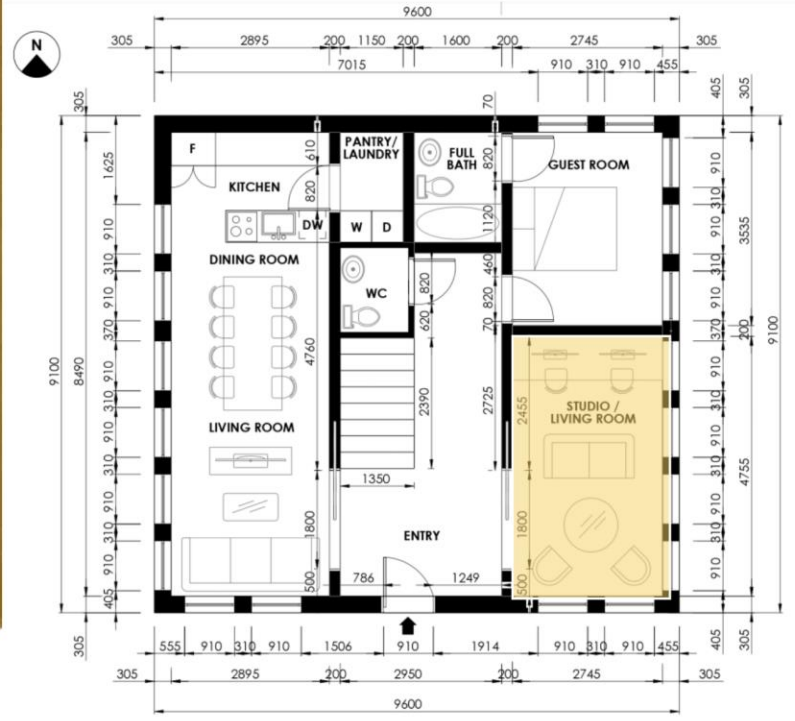
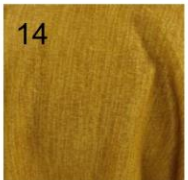
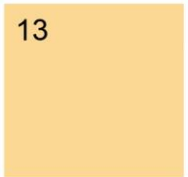
Clockwise from left: **1** Preparations for the meal, Antikeo; **2** Recessed Downlight Edu, Lamp and light; **3** Contemporary Glass Living Room Chandelier, Homary; **4** Vellore Cotton Velvet Cushion Case, Rituals; **5** Luxus Barock Sofa Rot, Casa Padrino; **6** Nike Statue, LivadoHome; **7** Tile Modern White TV Stand with Drawers & Doors Gold Media Console for TVs, Homary; **8** Curr's Glam Oval Coffee Table Marble Top with Stainless Steel Frame, Homary; **9** Porcelain flooring Marble calcatta, Leroy Merlin; **10** White Panel, Dulux; **11** Antique White, Dulux; **12** California Sands 3, Dulux; **13** Vela, James Dunlop; **14** Topaz, James Dunlop.

Dining Room



Clockwise from left: **1** 17th century animated landscape, Antikeo; **2** Marmo hanging light in gold, Maytomi; **3** Goblet Pleat Curtains, Donna Rolfe; **4** Dutchbone Round Corner Plant Stand, Perigold; **5** Luxus Barock Esszimmer Dining table and chairs set, Casa Padrino **6** Porcelain flooring Marble calcatta, Leroy Merlin; **7** White Panel, Dulux; **8** Antique White, Dulux; **9** California Sands 3, Dulux; **10** Palacio FR, James Dunlop; **11** Vienna, James Dunlop.

Studio Room



Clockwise from left: **1** Conversations, Hila Creations; **2** Gold Metal Ceiling Light Adjustable Branch, Homary; **3** Wave Cavendish Mimosa Gold Curtains, Blinds2go; **4** Rattan Brass Finish Planter, Woodesign; **5** Chunky knit throw blanket, Staunton and Henry; **6** Monumental Three Piece Curved Sofa, Collectedby; **7** Office chair in white curl and brass metal with wheels, Maisons du Monde; **8** Fabric Swivel Chair, Grays; **9** Leonor Side Tables, Kave Home; **10** Porcelain flooring Marble calcatta, Leroy Merlin; **11** White Panel, Dulux; **12** Antique White, Dulux; **13** California Sands 3, Dulux; **14** Trezor, James Dunlop; **15** Vela, James Dunlop.

Guest Room

10

11

12

13

14

1



5



2



3



4



6

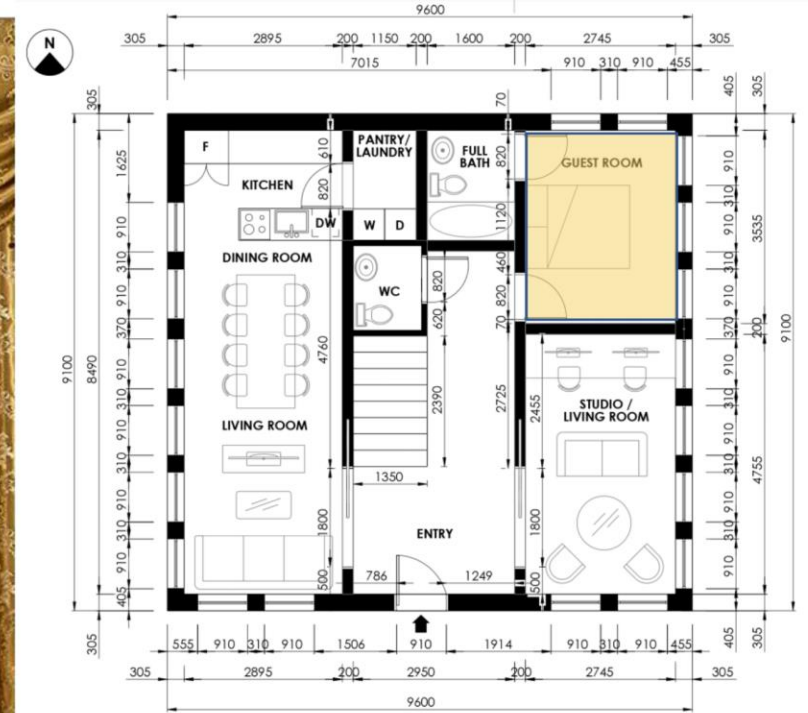


8

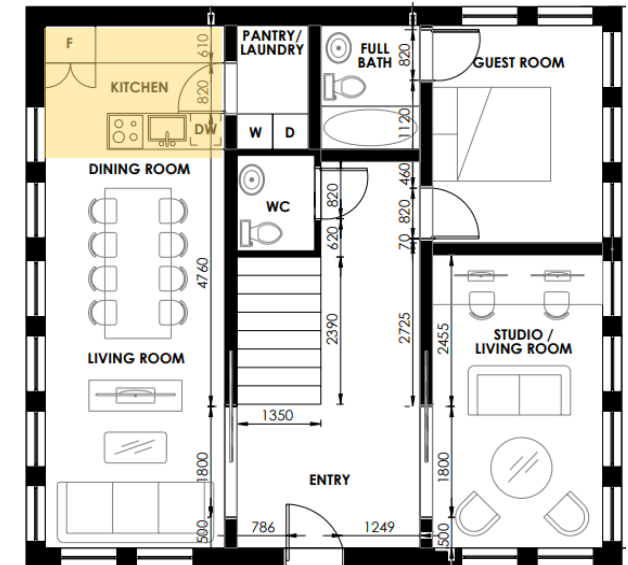
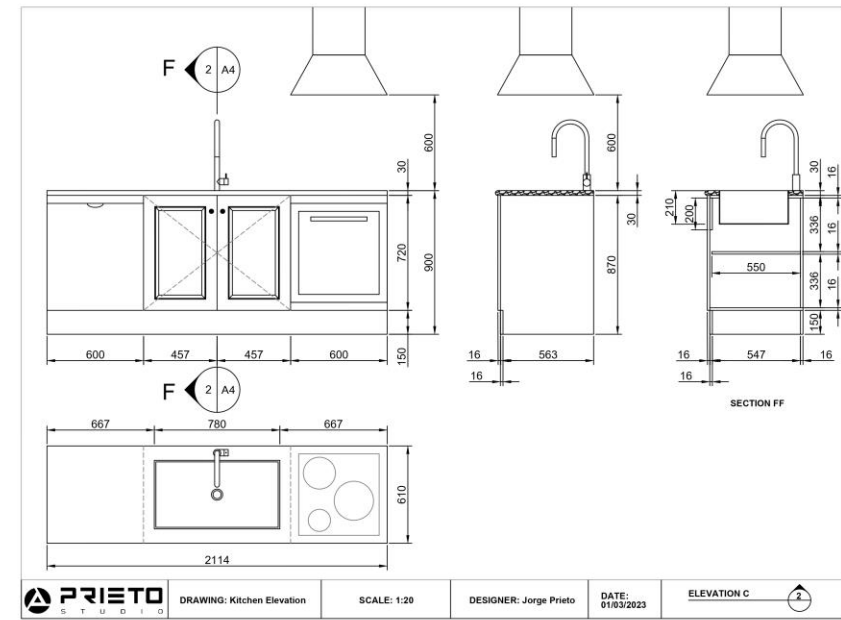
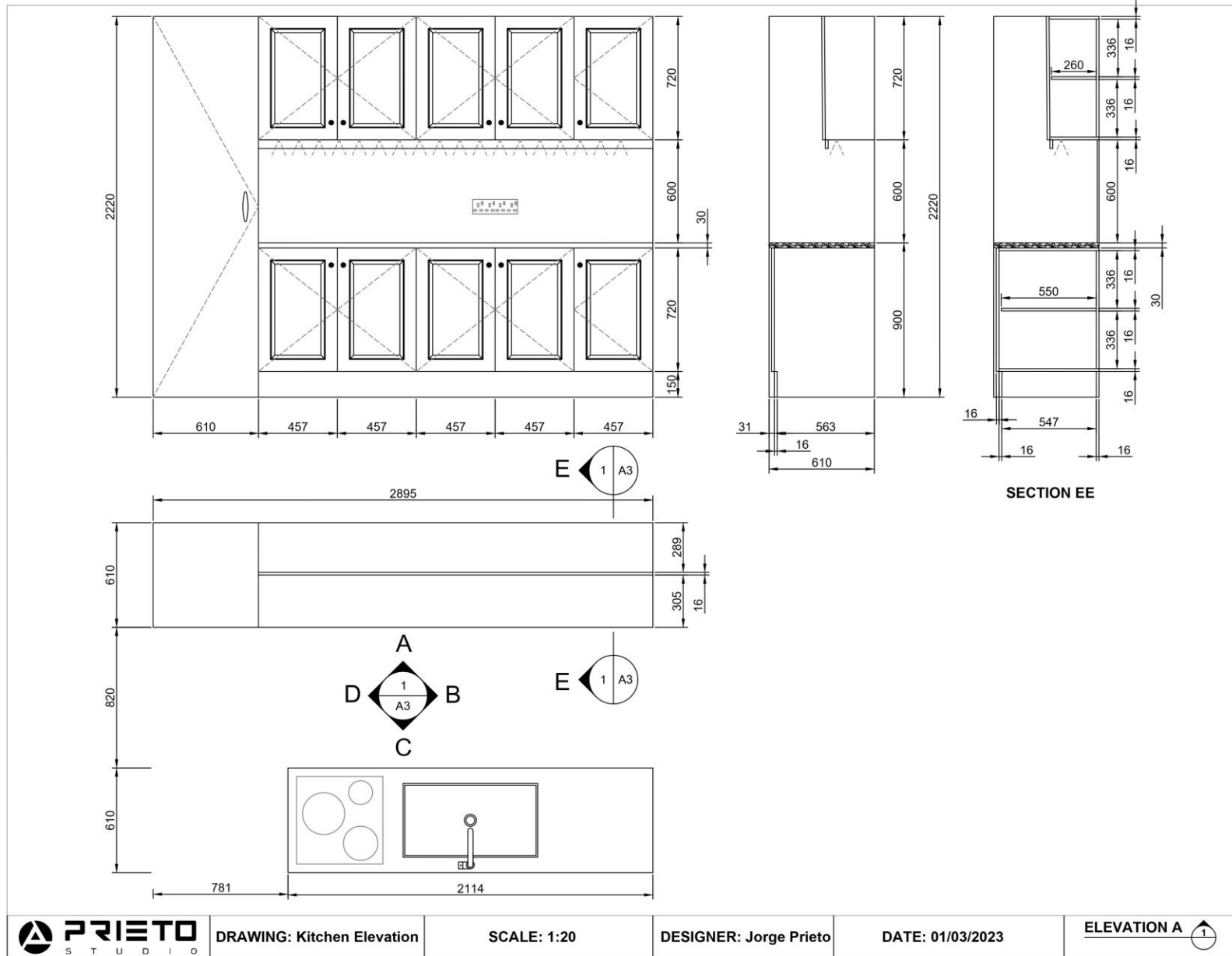
7



9

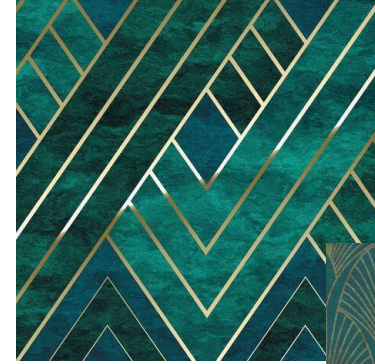


Clockwise from left: **1** Fête Champêtre, Antikeo; **2** WINDCALM DC, Create Store; **3** Recessed Downlight Edu, Lamp and light; **4** Golden Jacquard Waterfall Luxury Curtain Valance, ELKCA; **5** Modern Gold Brass Glass Crystal Wall Sconce, Claxy; **6** Kensington Mink & Gold Premium Abstract Headboard, Rowen Homes; **7** Goblet vase golden goblet metal antique decoration, Floristik24; **8** Faux fur throw in white, Maisons du Monde; **9** Porcelain flooring Marble calcatta, Leroy Merlin; **10** White Panel, Dulux; **11** Antique White, Dulux; **12** California Sands 3, Dulux; **13** Chateau, James Dunlop; **14** Topaz, James Dunlop.





1. Earthstone Beige, Ceramic City
2. Porcelain flooring Marble calacatta indoor/outdoor, Leroy Merlin
3. Eos Neo, Franke
4. Antique Brass Cabinet Knobs
5. Easycare Satinwood Antique White, Dulux
6. Palacio Topaz, James Dunlop
7. Coconut Palm Leaf

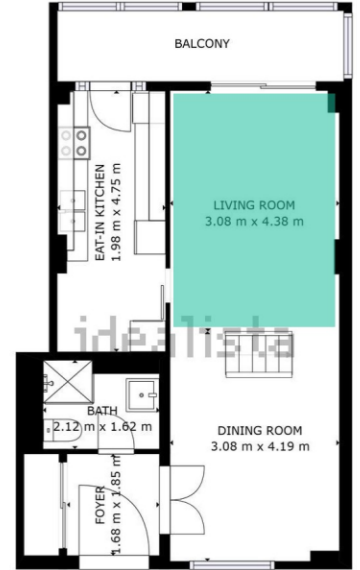


ART DECO

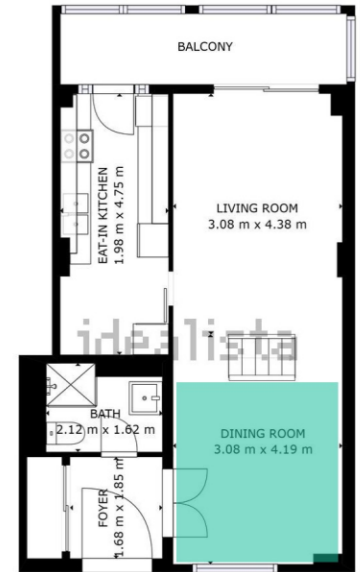
Reflecting an era of bewildering opulence and beauty, Art Deco reinstates the position of the human being as the centre of the Universe, surrounding it with magnificent designs that are but a constant reminder of his power and achievements. High-end materials such as marble, glass, brass, and velvet are used for this purpose as well as angular and geometrical patterns.

Vestiges of bygone eras like Aztec or Egyptian are used as well to emulate this sense of divinity that Art Deco embraces. We can find for this reason many aspects of their civilization were implemented in their designs like palm trees or stepped details like those of the ancient pyramids.

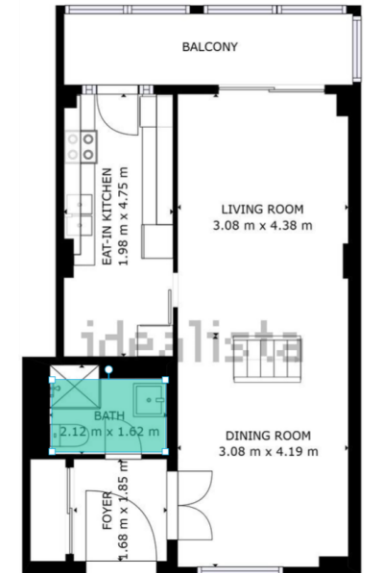
Soft pastel colours are used to wrap the environment in a comfortable yet extravagant look, ranging from gold and brass tones to green, dark blue and teal. We achieve this way a touch of splendour in the room intertwined with the exuberance of exotic vegetation.



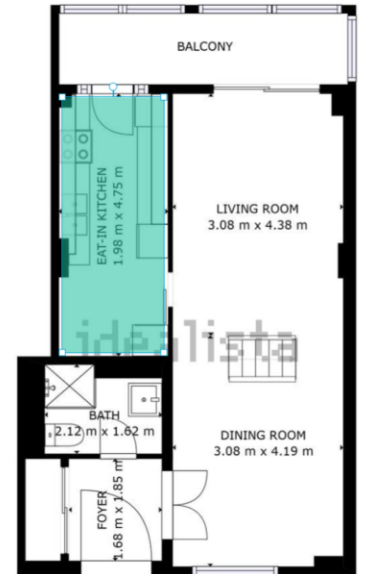
1. Grey steel 4, Dulux **2.** Delphinium Blue, Dulux **3.** Fortune green, Dulux **4.** Crystal surprise 1, Dulux **5.** Velvet touch 1, Dulux **6.** Brushed gold, Dulux **7.** DKD Home Decor Ceramic Black Gold Planter (13 x 13 x 18 cm), Barmet **8.** Woman with leaf, HunluStore **9.** Aberdeen 4-seater green velvety polyester corner sofa, Maisons Du Monde **10.** Long pile rug Whisper White, Benuta **11.** Zug coffee table, Vicalhome **12.** Fashionable And Luxurious Gold Metal Branch Ceiling Light Adjustable 6-Light Pendant Light, Homary **13.** Abstract woman face, HunluStore **14.** Chair Trapezium, Eichholtz



1. Grey steel 4, Dulux 2. Delphinium Blue, Dulux 3. Fortune green, Dulux 4. Crystal surprise 1, Dulux 5. Velvet touch 1, Dulux 6. Brushed gold, Dulux 7. Set of 2 Modern Dining Chairs Blue Velvet Upholstered Chairs with Arms, Homary 8. Modern gold planter planter with golden stand for indoor and outdoor metal, Homary 9. 63 Inch Rectangular Contemporary Dining Table in Gold with Sintered Stone Top, Homary 10. 10-Light Gold Kitchen Island Modern Linear Pendant Light with Glass Shade, Homary



1. Grey steel 4, Dulux **2.** Delphinium Blue, Dulux **3.** Fortune green, Dulux **4.** Crystal surprise 1, Dulux **5.** Velvet touch 1, Dulux **6.** Brushed gold, Dulux **7.** Golden bath shelf, HandleShopCouture **8.** RL3 tiles handmade tiles "fish scales", Dekornia **9.** LED opaline glass bathroom wall light Clamp, Westwingnow **10.** SORA Round gold metal mirror, Maisons Du Monde **11.** Bathroom Cabinet 60cm Madrid, Leroy Merlin **12.** Solar Gold Cabin, Rea



1. Grey steel 4, Dulux 2. Delphinium Blue, Dulux 3. Fortune green, Dulux 4. Crystal surprise 1, Dulux 5. Velvet touch 1, Dulux 6. Brushed gold, Dulux 7. Kitchen kit Atenas white, Leroy Merlin 8. Series 4 Built-in microwave, Bosch 9. Series 4 Oven 60 x 60 cm Stainless steel, Bosch 10. Kitchen Splashback Smooth Blue 60x200 cm, Maisons Du Monde